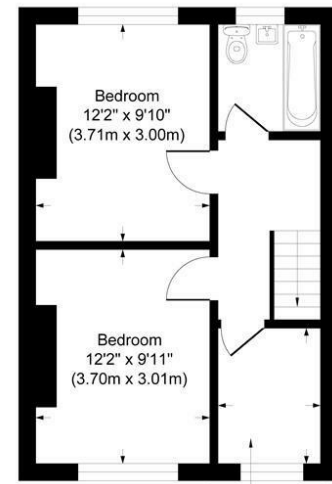


Ground Floor



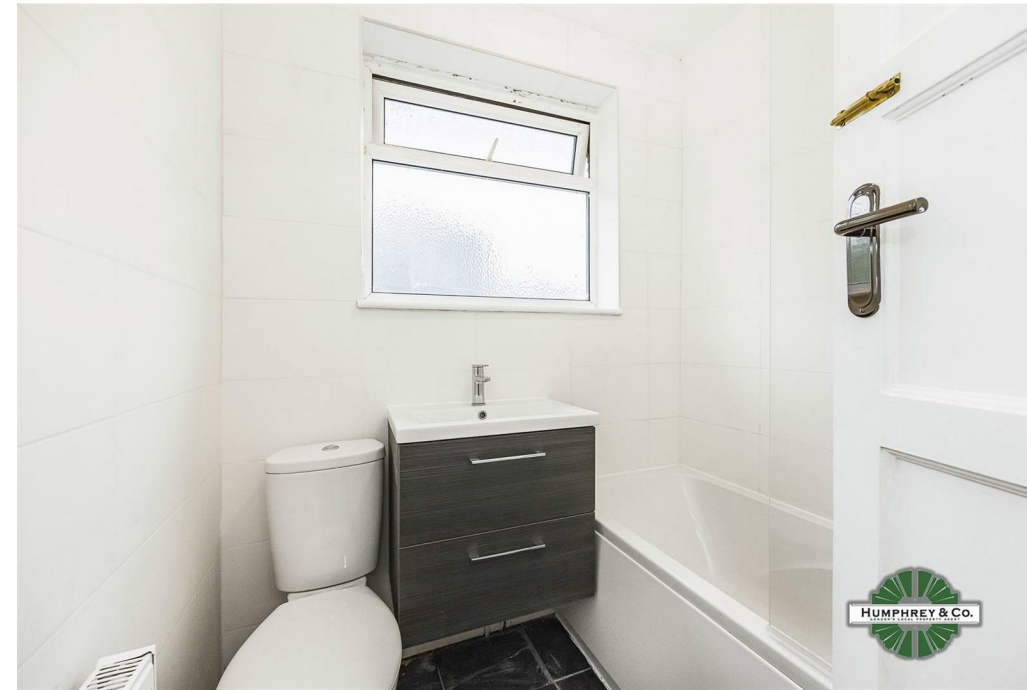
First Floor



## Royston Avenue

Approximate Gross Internal Area  
 Ground Floor = 39.2 sq m / 422 sq ft  
 First Floor = 37.4 sq m / 403 sq ft  
 Total = 76.6 sq m / 825 sq ft

This plan is for layout guidance only. Not drawn to scale unless stated. Windows and door openings are approximate. Whilst every care is taken in the preparation of this plan, please check all dimensions, shapes and compass bearings before making any decisions reliant upon them.



### Directions

### Contact

125 Hoe Street  
 London  
 E17 4RX

E: [lettings@hcolondon.com](mailto:lettings@hcolondon.com)

T: 02085 210 755

[hcolondon.com](http://hcolondon.com)



**3 Bed  
 House - Terraced  
 located in**



13 Royston Avenue

E4 9DE

£2,200 PCM



THREE BEDROOM HOUSE --- AVAILABLE NOW --- ON STREET PARKING --- PRIVATE GARDEN --- DOUBLE GLAZED & GAS CENTRAL HEATING --- TWO DOUBLES AND ONE SINGLE --- REFURBISHED THROUGHOUT ---

London's Local Property Agent, Humphrey & Co Estates are proud to introduce to the rental market this lovely three bedroom terraced house. Consists of a through lounge with laminate flooring, separate fully tiled kitchen with access to the rear garden. The first floor compromises of a part tiled bathroom, two double bedrooms and one single. Unfurnished and Refurbished throughout. Give our friendly team a call on 02085210755 to secure a viewing!

### Summary

