



Sunlight Square, London, , E2 6LD £2,400 PCM

Elms Estates are delighted to bring to the market for Let this fabulous two double bedroom apartment situated on the 2nd Floor of this desirable building located within a short walk of Bethnal Green (Central Line) Tube Station.

Sunlight Square, offers spacious accommodation with a Juliet balcony in the reception room which is open plan with a modern Fitted kitchen, Two double bedrooms and a modern shower room. The property is located within this secure gated development maned with a concierge. Sunlight Square is also situated within the heart of Bethnal Green with easy access to all of the Restaurants, Bars, Shops, Gyms, Parks, Galleries and Museums this Exciting Area has on offer.

The property is available to move in to from 20 November 2024 Onwards.

An early internal inspection is highly recommended in order to avoid disappointment.

For more information or to arrange a viewing please do not hesitate to call in and speak with one of our Property Consultants.



Reception Room/Kitchen

19'8" x 18'8" (6.0 x 5.7)

Bedroom One

10'5" x 10'2" (3.2 x 3.1)

Bedroom Two

10'2" x 9'2" (3.1 x 2.8)

Shower Room

Material Information

Deposit: £2,769.23

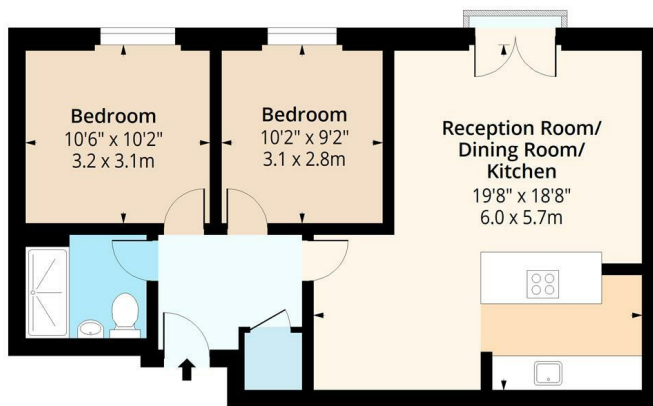
Length Of Tenancy: One Year

Council Tax Band: D



Sunlight Square, E2

Approx. Gross Internal Area 657 Sq Ft - 61.04 Sq M



Second Floor

Floor Area 657 Sq Ft - 61.04 Sq M

Floor plan is for illustrative purposes only and is not to scale. Every attempt has been made to ensure the accuracy of the floor plan shown, however all measurements, fixtures, fittings and data shown are an approximate interpretation for illustrative purposes only.

lpplus.com



Energy Efficiency Rating		Environmental Impact (CO ₂) Rating	
Current	Potential	Current	Potential
Very energy efficient - lower running costs			
Very environmentally friendly - lower CO ₂ emissions			
England & Wales			
EU Directive 2002/91/EC			

The table displays energy and environmental ratings. The Energy Efficiency Rating shows a current score of 80 and a potential score of 82, both in the 'B' category. The Environmental Impact (CO₂) Rating shows a current score of 82 and a potential score of 82, both in the 'B' category. The ratings are based on the EU Directive 2002/91/EC for England & Wales.