



Beaurevoir Way, Warwick, CV34 4NY

**SHELDON  
BOSLEY  
KNIGHT**

LAND AND  
PROPERTY  
PROFESSIONALS

# Property Description

A stylish three storey, three bedroom town house situated on this highly regarded development ideally located between Leamington Spa and Warwick.

The accommodation comprises of - Spacious living room, superb kitchen/diner with range of integrated appliances and cloakroom/w.c

On the first floor there are two double bedrooms, a refitted family bathroom, and on the second floor a large master bedroom with dressing area and refitted en-suite shower room.

To the rear there is a garden with patio area and being part lawned. There is also an allocated parking space to the rear.

The property is being sold with no upward chain.





## Key Features

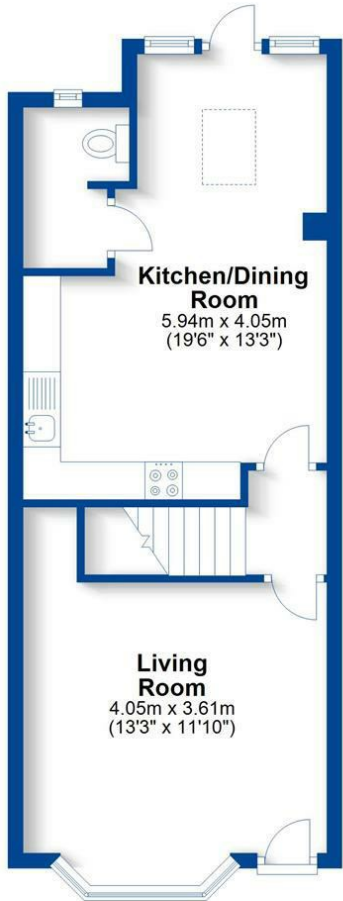
- Superb three storey town house
- Three bedrooms
- Sought after location between Leamington & Warwick
- Fantastic kitchen/dining room
- Living room
- Bathroom & En-suite
- Allocated parking space
- Rear garden
- No Chain

**Offers Over  
£400,000**



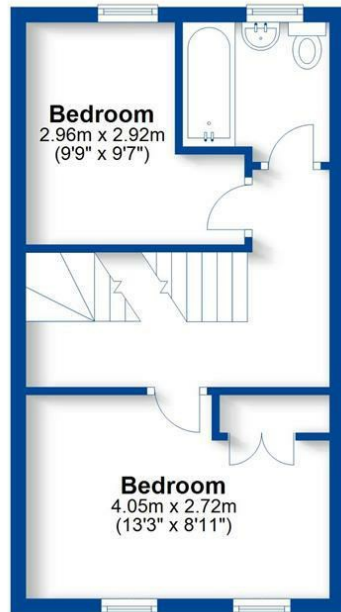
### Ground Floor

Approx. 42.4 sq. metres (455.9 sq. feet)



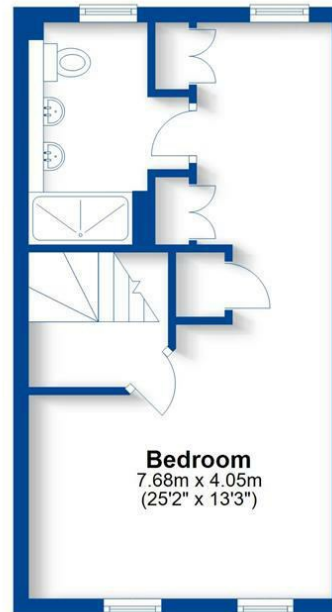
### First Floor

Approx. 30.9 sq. metres (332.8 sq. feet)



### Second Floor

Approx. 31.1 sq. metres (334.8 sq. feet)



Total area: approx. 104.4 sq. metres (1123.6 sq. feet)

This plan is for illustration purposes only and should not be relied upon as a statement of fact  
Property of Sheldon Bosley Knight not to be reproduced



EPC Rating - C

Tenure - Freehold

Council Tax Band - E

Local Authority  
Warwick District Council



We routinely refer clients to both our recommended legal firm and a panel of financial services providers. It is your decision whether you choose to deal with these companies. In making that decision, you should know that we receive a referral fee.

**SHELDON  
BOSLEY  
KNIGHT**

LAND AND  
PROPERTY  
PROFESSIONALS