



The Gatehouse, Bedford Road, Clapham, SW4

2 bedroom house to let

£638 Per Week

Part furnished

Property Details

Keating Estates are proud to present to market this unique two bedroom house with private garden and an atrium, ideally located between Clapham and Brixton High Streets in a secure, gated setting.

A rare opportunity to live in a one of a kind, two double bedroom house, nestled quietly off Bedford Road, ideally located between Clapham and Brixton High Streets. This unique 19th Century converted Printworks has been featured in Marie Claire & the Sunday Times Style Magazine, and started life a Georgian stable block, before being developed over time. The property is tucked away securely behind an industrial steel door with an entry phone and surrounded by neighbouring gardens.

This beautifully presented home offers just shy of 800 square feet of internal living space, packed full of character. Natural light is a running theme in this property with floor to ceiling glass windows and multiple skylights which all contribute to the bright and airy atmosphere throughout. The South-facing open plan living space has real WOW factor and it is clear the whole house has been developed with care and attention to detail.

Vaulted ceilings create a fantastic entertaining area with plenty of room to dine and socialise comfortably. The living space benefits from underfloor heating throughout, wooden parquet

Features

- Two bedroom
- Private garden plus an atrium
- Vaulted double height ceilings
- Mezzanine level, flexible living space
- Underfloor heating and a bio ethanol fire
- Almost 800 square feet
- Tucked away quietly in a secure location between Clapham and Brixton High Streets
- Northern and Victoria tube lines

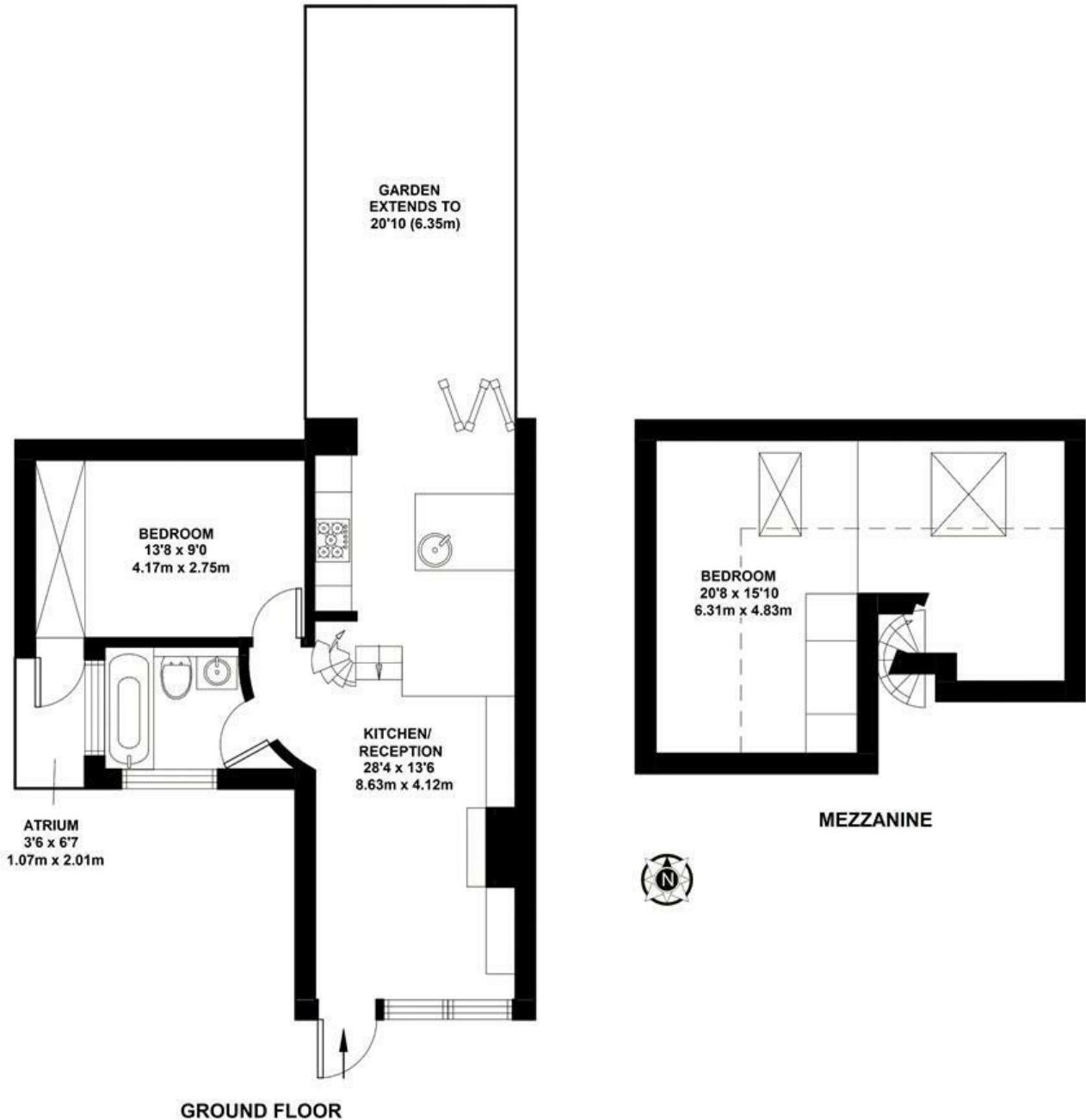
Council tax band G EPC rating C (74)



The Gatehouse, Bedford Road, Clapham, SW4

The Gatehouse, Bedford Road, SW4
2 Bedroom House

APPROXIMATE GROSS INTERNAL AREA: 793 SQ FT / 74 SQ M



While we try our very best, floor plans are produced as a guide only and we take no responsibility for the precise accuracy with which any property is represented.

The Gatehouse, Bedford Road, Clapham, SW4

