



1st Floor Office, 42a East Street, Newquay, TR7 1BE

david ball
Agencies

An exciting opportunity to rent office space in the heart of Newquay. Located on the first floor with its own entrance, this bright and airy workspace would suit persons looking for that perfect office.

Office one £120 per week £6,240 per annum

Office two £100 per week £5,200 per annum

Both offices £200 per week £10,400 per annum

£6,240 Per Annum

Key Features

- Town Centre Office Space
- Kitchen Area
- New lease with Terms to be Agreed
- Offices from £100 per week
- Two First Floor offices
- Suitable for a variety of Uses
- Easy in and out Lease
- Call to Enquire

Agents Note

Supplied services and appliances have not been tested by the agent. Prospective purchasers are advised to make their own enquiries.

The Location

The property is situated on the corner of East Street and Grosvenor Avenue opposite Newquay's main post office and close to Tesco Express. East Street is one of the main four trading areas in the town.

Stairs and landing to Upper First Floor

Landing. Doors leading to two offices and kitchen. UPVC double glazed window to the side.

Communal Kitchen

10'10" x 7'5" (3.32 x 2.28)

Length of roll edge laminated work surface with inset stainless steel sink unit and drainer with tiled splash back over. Range of cupboards, drawers and fridge under. Florescent strip lighting. Sealed unit double glazed window to the front





Office One

17'7" x 12'4" max (5.36m x 3.76m max)

Bay window with UPVC double glazed window to the front. Lighting. Power points. Door to hallway. Internal door to
£120 per week

Office Two

18'0" x 12'5" (5.49m x 3.78m)

UPVC sealed unit double glazed window to the rear. Power points. Lighting
£100 per week

WC

Ladies and Gents WC facilities to the first floor.

Agents Note

Water is included in the rent.

Lease

A new easy in and out lease with terms to be agreed.

Agents Note

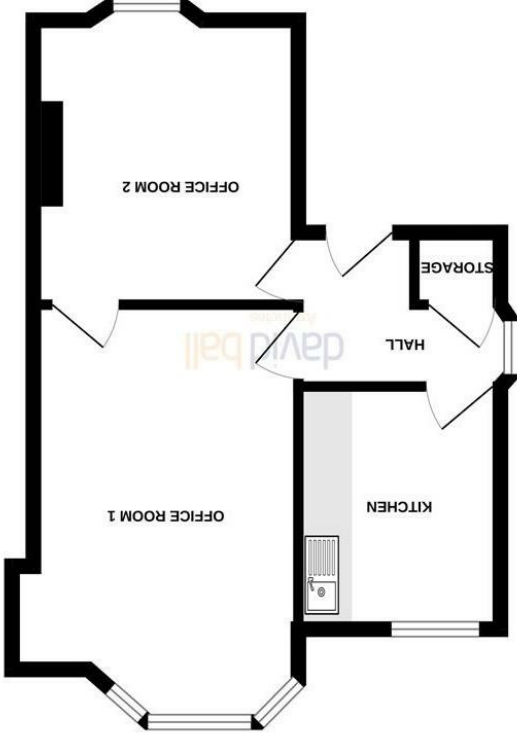
Offices can be let separately or for both spaces £200 per week.





Connecting People to Property Perfectly

e.sales@dba.estate
34 East Street, Newquay, Cornwall TR7 1BH



GROUND FLOOR

Which energy ratings have been made to ensure the accuracy of the figures contained here, measurements of doors, windows, rooms and other areas are approximate and no responsibility is taken for any error, omission or misstatement. They have to be done by a qualified person and not be used as a guarantee of date, windows, rooms and other areas are approximate and no responsibility is taken for any error, omission or misstatement. They have to be done by a qualified person and not be used as a guarantee as to their operating or efficiency rate given.

Made with Mapbox ©2024

Energy Efficiency Rating	
Current	Potential
Very energy efficient - lower running costs	
A (82 plus)	A (82 plus)
B (81-81)	B (81-81)
C (69-80)	C (69-80)
D (55-68)	D (55-68)
E (39-54)	E (39-54)
F (21-38)	F (21-38)
G (1-20)	G (1-20)
Not energy efficient - higher running costs	

England & Wales
EU Directive 2002/91/EC

1. Particulars: these particulars are not an offer or contract nor part of one. You should not rely on statements by David Ball Agencies (DBA) in the particulars or by word of mouth or in writing as being factually accurate about the property, its condition or value. Neither DBA nor any joint agent has any authority to make any representation about the property or development and accordingly any information given is entirely without responsibility in the part of the agents, sellers or lessors. 2. Images paragraphs and other information: any computer generated images, plans, drawings, accommodation schedules, specifications details or other information provided about the property ("information") are indicative only. Any such information may change at any time and must not be relied upon as being factually accurate about the property. Any photographs are indicative of the quality and style of the development and do not represent the actual fitting and furnishing at this development. 3. Regulations: any reference to alterations to the property or use of any part of the development is not a statement that any necessary planning, building regulations or other consents has been obtained. These matters must be verified by an intending purchaser. 4. Fixtures and fittings: supplied