



**Endymion Road, Brixton, SW2**

2 bedroom flat - conversion to let

**£400 Per Week**

Furnished

## Property Details

This is a superb open plan two bedroom conversion flat complete with a modern finish. The open plan reception and kitchen are finished to the highest standard and include hardwood flooring, a feature fireplace and a bay window. Two double bedrooms share one chic and modern bathroom. The property is ideally located in a quiet residential street just a 15 minute walk away from the hustle and bustle of Brixton and is also less than a 10 minute walk from the ever so popular Brockwell Park.

## Features

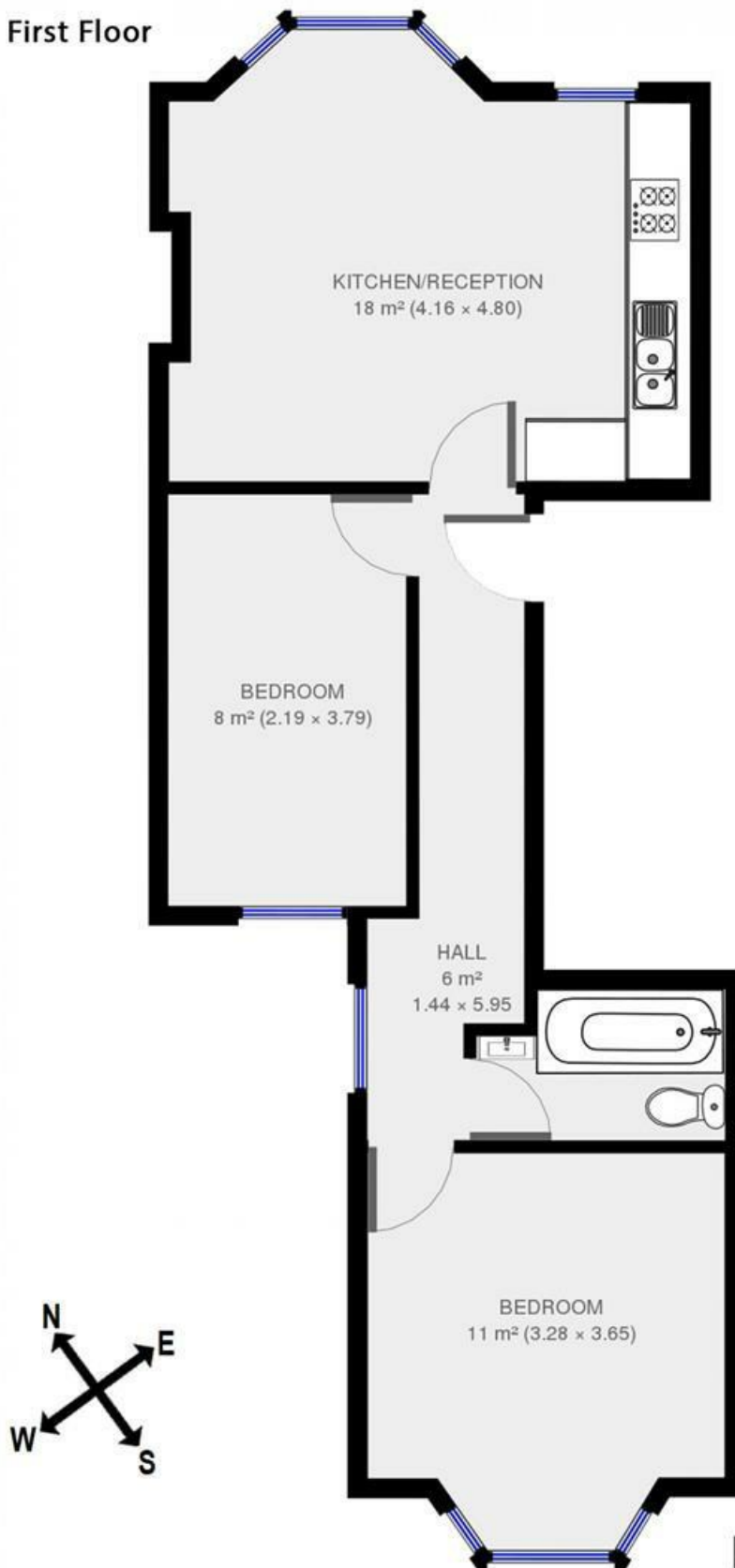
- Two bedrooms
- One bathroom
- Open plan kitchen/reception
- Victorian conversion
- Bright and airy
- Around a 7 minute walk to Brockwell park
- Close to Central Brixton

Council tax band C      EPC rating C (79)



Endymion Road, Brixton, SW2

First Floor



**K**

2 bed flat.

Approx internal area:

517 sqft 48 sqm

While we do try our very best, floor plans are produced as a guide only and we take no responsibility for the precise accuracy with which any property is represented

Endymion Road, Brixton, SW2

