

39 Alexandra Road, Lostock, Bolton, Greater Manchester, BL6 4BE



**£1,050 PCM**

- 3 Bedrooms
- Double Glazing
- Close to Amenities
- 2 receptions
- Fitted Kitchen
- Deposit £875





### Entrance Hall

Double glazed window to side, stairs, aluminium double glazed door to front.

### Lounge 12'5" x 12'0" (3.78 x 3.66)

UPVC double glazed bay window to front, decorative living flame effect gas fire with feature stone built surround, double radiator.

### Dining Room 12'5" x 10'5" (3.78 x 3.18)

Ornamental fitted coal effect gas open fire, set in and marble surround.

### Sun Room

Double radiator, uPVC double glazed patio door.

### Kitchen 5'7" x 12'6" (1.7 x 3.81)

Fitted with a matching range of base and eye level units with worktop, with drawers, cornice trims, ceramic tiled splashbacks, stainless steel sink unit with single drainer and mixer tap, extractor fan over-unit, plumbing for automatic washing machine, space for fridge and freezer, built-in fan assisted oven, ceramic hob, aluminium double glazed window to side, aluminium double glazed window to rear, vinyl flooring.

### Landing

UPVC opaque double glazed window to side.

### Bedroom 2 9'10" x 9'10" (3 x 3)

UPVC double glazed window to rear with a range of wardrobes, radiator.

### Bathroom

Small uPVC frosted double glazed window to side, two piece colored suite comprising pedestal wash hand basin and bath, full height ceramic tiling to all walls.

### W.C

UPVC frosted double glazed window to rear, with low level W,C

### Bedroom 1 10'11" x 12'6" (3.33 x 3.81)

UPVC double glazed window to front, fitted bedroom suite with a range of wardrobes with hanging rail, shelving, overhead storage.

### Bedroom 3 6'11" x 8'5" (2.11 x 2.57)

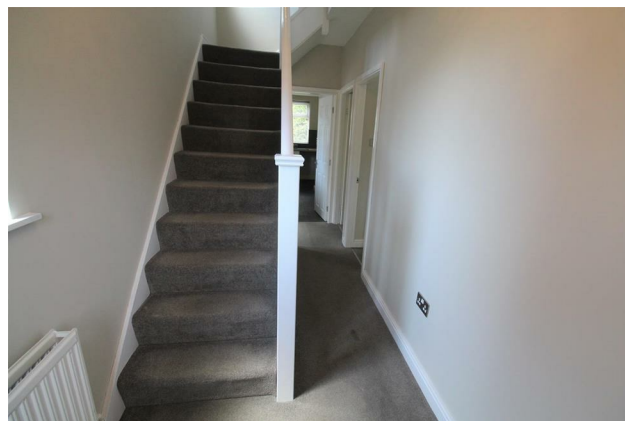
UPVC double glazed window to front, radiator.

### Outside Front

Enclosed by a small brick wall and privet hedging with a flagged path and flagged driveway leading to rear.

### Outside Rear

Large lawned area with paved sun terrace enclosed by



mature hedges to sides and a wooden fence to the rear, the garden is planted with mature shrubs and plants.



