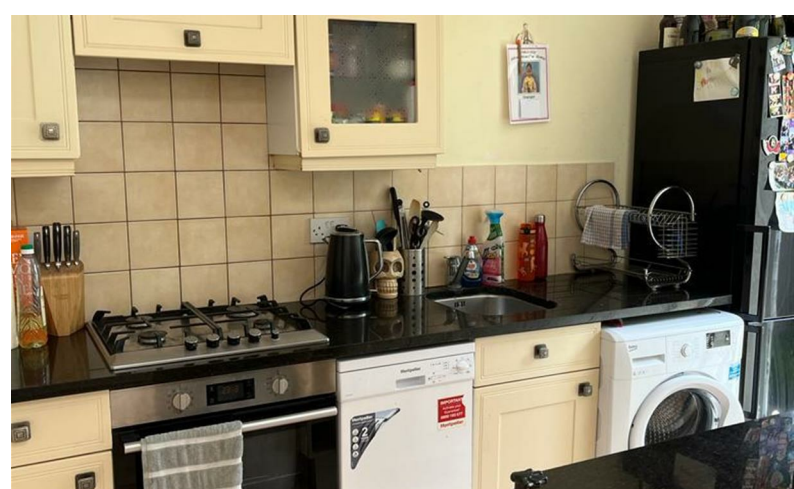
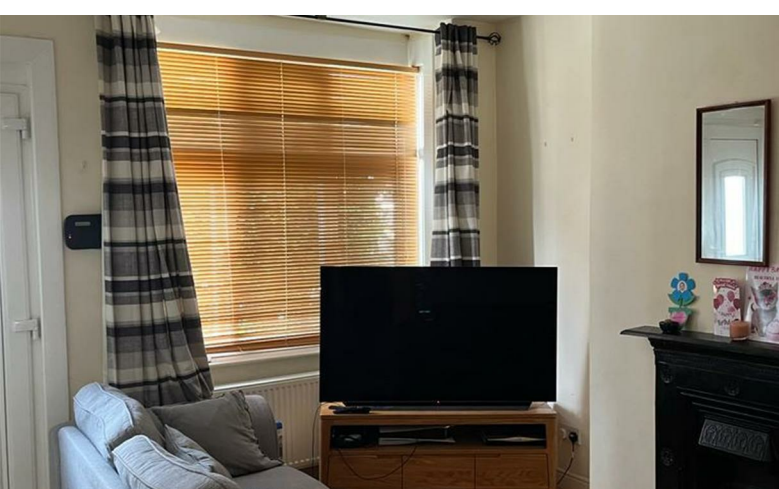


C. JAMES & CO.

SALES AND LETTINGS AGENTS



£1,800 PCM

14 Ashtree Avenue, Mitcham, Surrey, CR4 3DR

14 Ashtree Avenue, Mitcham, Surrey, CR4 3DR

A two double bedroom mid-terrace house in a quiet location and within walking distance of Colliers Wood tube and local retail parks. Good condition throughout, two bathrooms, large rear garden, unfurnished and available from 3rd August 2023.

EPC Rating 'C'

Merton Council Band 'C' £1579.08pa

Credit References and Deposit

Prospective tenants will be required to complete a credit referencing application payable whether successful or not. Prior to taking occupation of the property you will be required to pay a deposit of 1½ times the monthly rent, the first months rent in advance and an administration fee.

Directions

