



**Hinton Road, Herne Hill, SE24**

1 bedroom flat - conversion for sale

**£450,000**

Share of Freehold

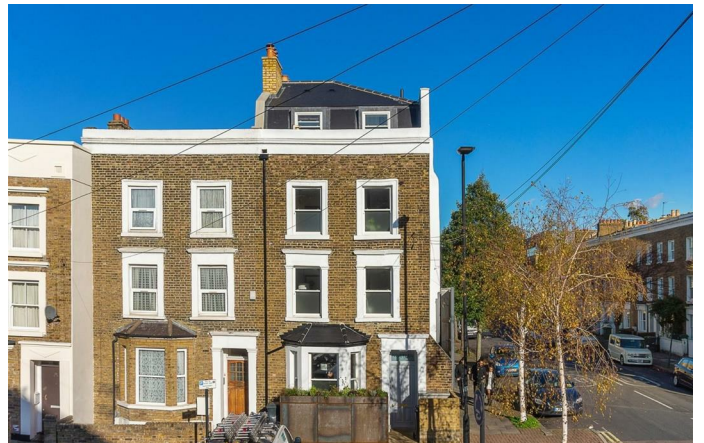
## Property Details

This stunning one bedroom apartment with walk-in dressing room is immaculate throughout, having been recently developed, ideally situated minutes from Loughborough Junction, Herne Hill and the heart of Brixton. The open-plan reception room is bathed in sunlight from large sash windows, a sociable hub offering generous space in which to cook, dine and unwind. The kitchen is equipped with mod-cons, neatly integrated within sleek neutral cabinetry boasting ample storage space, an island breakfast bar and stylish touches such as the feature extraction and mood lighting. A large dining area seamlessly wraps around in an 'L' shape, creating a lounge area to the rear. The bathroom is finished with a high standard of fixtures and trendy fittings which pop against grey mottled hues, equipped with both rain-head shower and bathtub. Tucked away to the rear is a spacious bedroom, with no-one above this calming room enjoys a peaceful setting and benefits from an enviable walk-in dressing room, styled with sleek wardrobes. Tastefully renovated throughout this appealing property is ready to move into stress-free and is sure to charm a wide range of purchasers, early registration of interest is advised.

## Features

- One double bedroom
- Walk-in dressing room
- End-of-terrace Victorian conversion
- Recently renovated throughout
- Beautifully finished
- Ruskin Park, Brockwell Park and Herne Hill within a short walk
- Multiple overground stations in walking distance
- Brixton and the Victoria line nearby
- Share of freehold
- Chain-free

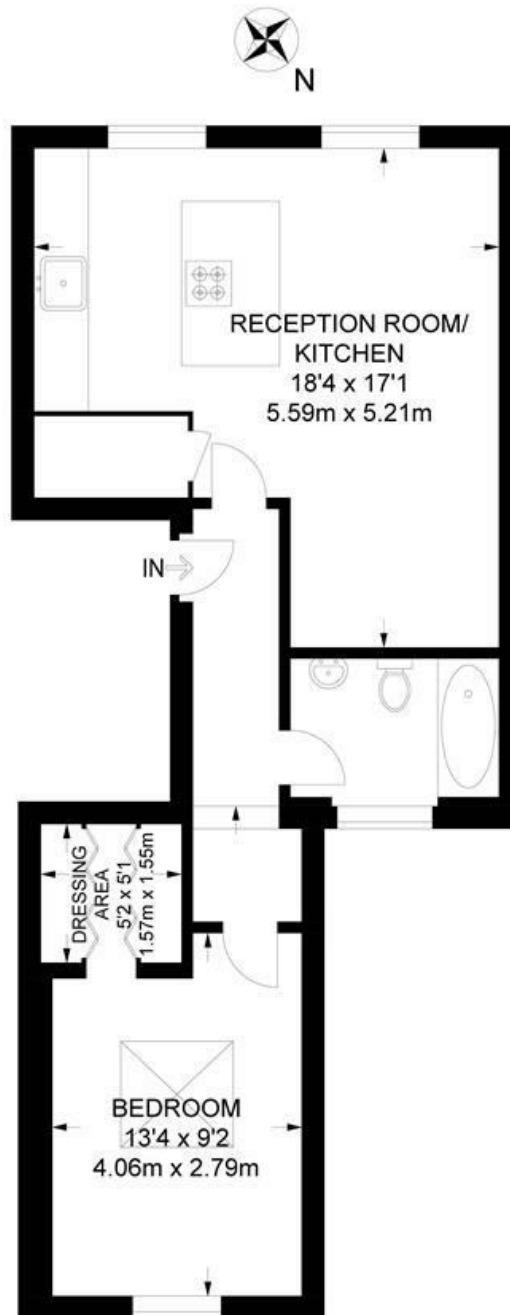
Council tax band C    EPC rating C (72)



Hinton Road, Herne Hill, SE24

**Hinton Road, SE24**  
**1 Bedroom Flat**

APPROXIMATE TOTAL INTERNAL AREA: **510 SQ FT / 47.4 SQ M**



FIRST FLOOR



While we try our very best, floor plans are produced as a guide only and we take no responsibility for the precise accuracy with which any property is represented.

Hinton Road, Herne Hill, SE24

