

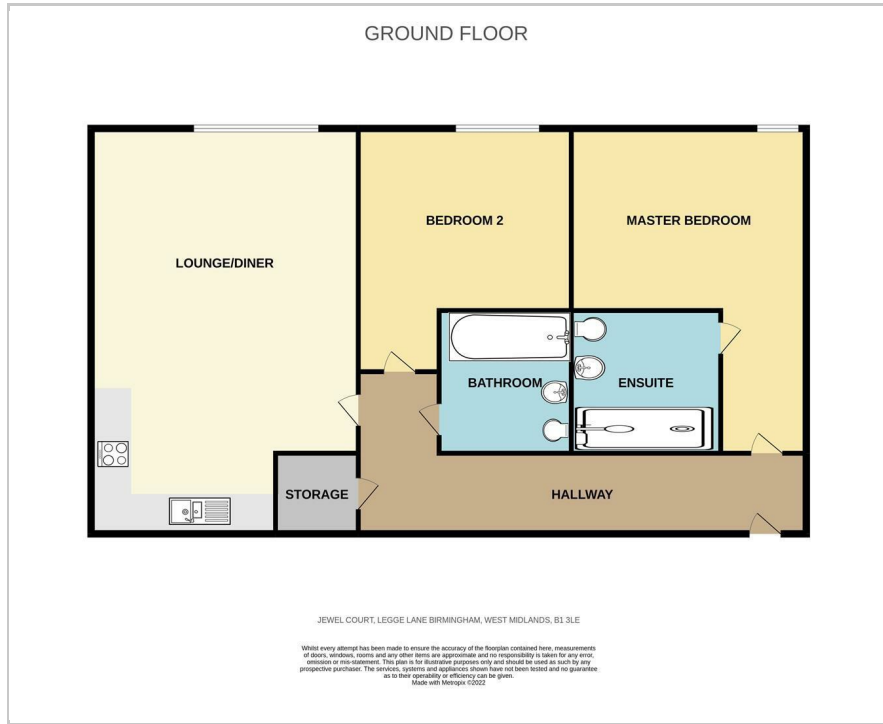
## Apartment 61 Jewel Court, Legge Lane

Birmingham, B1 3LE

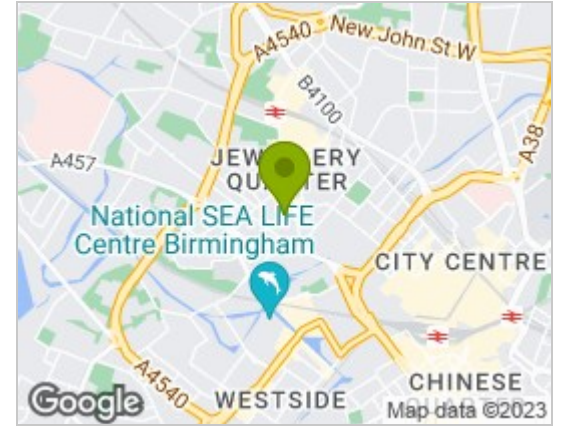
Offers Over £260,000



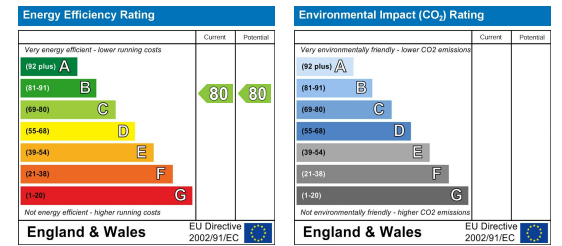
## Floor Plan



## Area Map



## Energy Efficiency Graph



## Viewing

Please contact our LV PROPERTY Office on 01212857575 if you wish to arrange a viewing appointment for this property or require further information.

- ALLOCATED PARKING ■ TWO BEDROOM APARTMENT SPACE
- BRILLIANT LOCATION ■ THIRD FLOOR APARTMENT
- LOW SERVICE CHARGES ■ GREAT TRANSPORT ROUTES



LV PROPERTY is proud to present this generous two-bedroom city centre apartment in the Jewel Court development in the perfect location of the Jewellery Quarter. The apartment boasts a luxurious space perfect for someone looking to put a stamp on their new home! The integrated kitchen has large windows letting in plenty of light, and is the perfect space for someone who likes to entertain with plenty of room for a dining area. The apartment also comprises two double-bedrooms, and two bathrooms, one of which is an en-suite. The separate bathroom has a shower over the bath and has been finished to an extremely high standard. This third-floor apartment also comes with one secure allocated parking space which is an extremely rare but sought-after commodity in the city centre.

Jewel Court is situated just 0.3 miles from the picturesque views of St Paul's Square. Being based in the Jewellery Quarter means you will be surrounded by many restaurants and bars, and never short of somewhere to eat and drink. If you consider yourself a foodie, why not take a trip to Ana Rocha, they specialise not only in Spanish cuisine but also have antiques on display from all around the world.

The Jewellery Quarter is a perfect option for those who are looking to find a homely village vibe in the city. Jewel Court is only 0.3 miles from Colmore Row, making it an excellent option for working professionals. You would also be just 0.7 miles from the Bullring & Grand Central, meaning you are never far away from a wide variety of shops and transport links.



These particulars, whilst believed to be accurate are set out as a general outline only for guidance and do not constitute any part of an offer or contract. Intending purchasers should not rely on them as statements of representation of fact, but must satisfy themselves by inspection or otherwise as to their accuracy. No person in this firm's employment has the authority to make or give any representation or warranty in respect of the property.



0121 285 7575  
www.lvproperty.co.uk

157c Warstone Lane, Jewellery Quarter,  
Birmingham, West Midlands, B18 6NZ