



**Shakespeare Road, Herne Hill, SE24**

**£525,000**

2 bedroom flat - conversion for sale

Share of Freehold

## Property Details

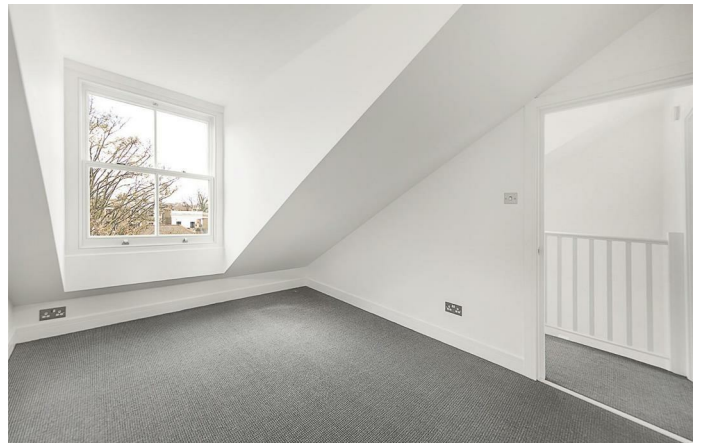
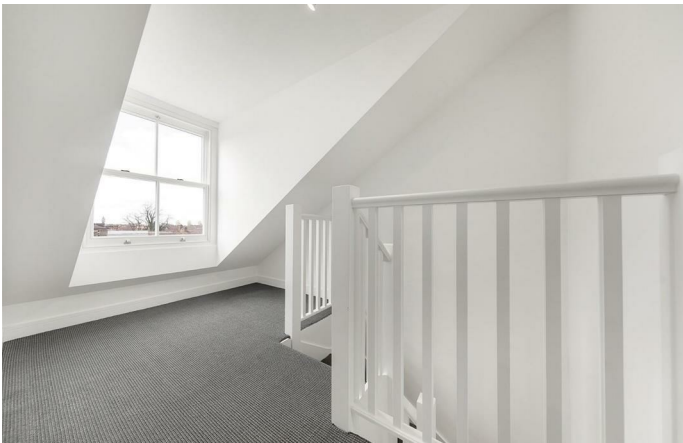
The property boasts a wonderfully bright, open plan reception room at the front of the house, flooded with natural light and complete with a brand new finish throughout and plenty of character. The room spans the width of the property meaning there is plenty of space to relax and unwind as well as to dine. The modern kitchen is tastefully designed and provides all you might need in terms of storage and worktop space whilst also offering another area in which you could have a dining table. The first bedroom is a well-proportioned double room, boasting views over the Victorian terraced streets below and also spanning the width of the house. Tucked away quietly at the rear of the property, overlooking the neighbouring gardens below is the second bedroom. The bathroom is modern, sleek and inviting. This is a beautiful and neutrally presented flat, perfect for anyone looking to move in straight away and stamp their own mark over time.

## Features

- Two double bedrooms
- Bright and airy throughout
- Over 940 square feet of internal space
- Split-level
- Victorian conversion
- Highly sought after residential area
- Local amenities and transport links of Herne Hill
- Brockwell Park
- Share of freehold
- Chain-free

Council tax band      EPC rating C (79)







## Shakespeare Road

### 2 Bedroom Flat

Approx internal area:

**948 sqft 88 sqm**

While we do try our very best, floor plans are produced as a guide only and we take no responsibility for the precise accuracy with which any property is represented



Shakespeare Road, Herne Hill, SE24

