



Loughborough Road, Brixton, SW9

2 bedroom maisonette for sale

£540,000

Share of Freehold

Property Details

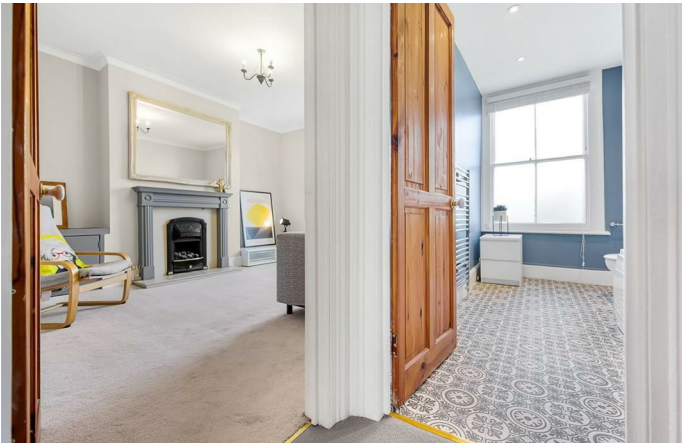
Set on a desirable and leafy residential road near to all of the action Brixton has to offer, this split level flat benefits from an abundance of natural light that promotes an incredibly airy atmosphere.

The current owners have really made the most of the charming rooms and the generous proportions within the property. Characterful features are a running theme throughout, with high ceilings, a feature fireplace, and pretty sash windows. With almost a thousand square feet of internal living space, and a staircase meandering up through a central hallway, this lovely flat feels like a home, as soon as you walk through the door. It is smartly presented and ready for a purchaser to move in, hassle-free. The first floor comprises a separate eat-in kitchen, a modern bathroom, and a large reception room to the front. Upstairs lies the two double bedrooms. The property also has the added benefit of being share of freehold.

Council tax band D EPC rating D (58)

Features

- Two double bedrooms
- Over 980 square feet of internal space
- Bright and airy throughout
- Split over two floors
- Demised front garden
- Sought-after area close to Brixton
- Walking distance to Victoria and Northern lines
- Close to huge selection of amenities and Brockwell Park



Loughborough Road, Brixton, SW9

K

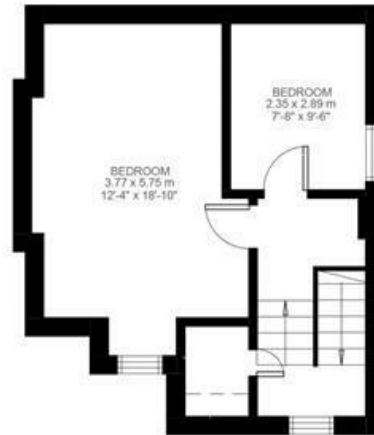
Loughborough Road

2 Bedroom Flat

Approx internal area:

983 sqft 91 sqm

While we do try our very best, floor plans are produced as a guide only and we take no responsibility for the precise accuracy with which any property is represented



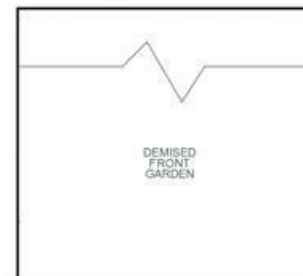
Second Floor



Ground Floor



First Floor



Loughborough Road, Brixton, SW9

