

**Craster Road, Brixton, SW2**

1 bedroom flat for sale

£369,950

Property Details

A 630 square foot split-level one double bedroom Victorian period conversion flat located within walking distance to Brixton, Herne Hill, Tulse Hill and Streatham Hill stations. The spacious double bedroom and modern bathroom are tucked away quietly at the back of the building with views of the neighbouring gardens at the rear. The reception room has fantastic vaulted ceilings and ample room for a dedicated TV area with a separate area to dine with space for a large dining table. Skylights and windows with views of the London skyline make this a lovely living space, perfect for entertaining.

Features

- Chain free
- Victorian
- Split-level
- Bright and airy throughout
- Over 630 square feet of internal living space

Council tax band C EPC rating D (66)





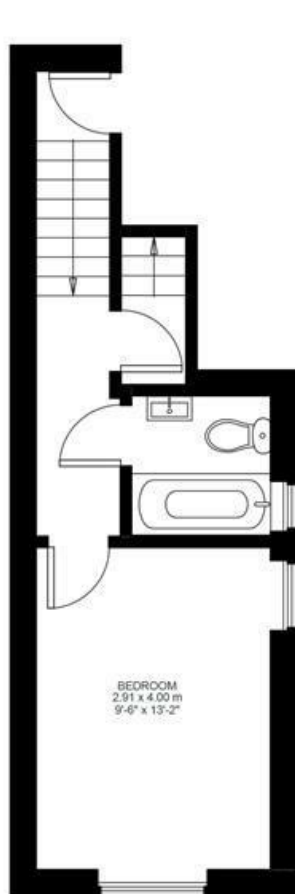
Craster Road

1 Bed flat

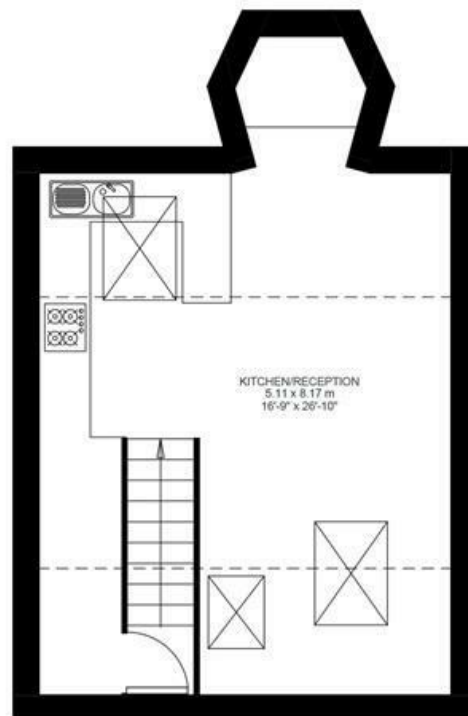
Approx internal area:

634 sqft 59 sqm

While we do try our very best, floor plans are produced as a guide only and we take no responsibility for the precise accuracy with which any property is represented



First Floor



Second Floor



Craster Road, Brixton, SW2

