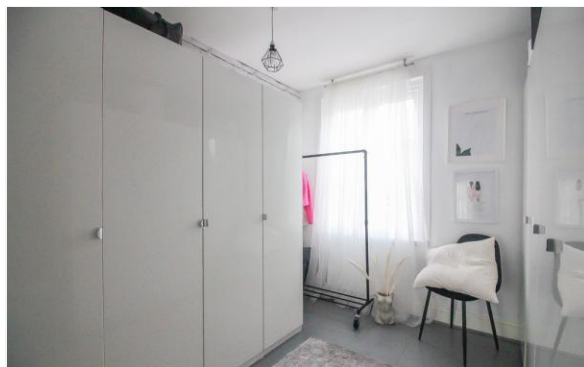
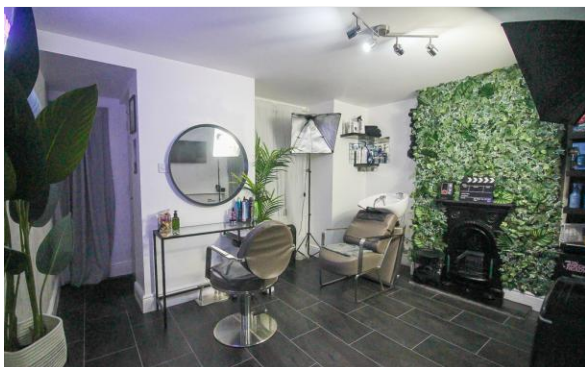
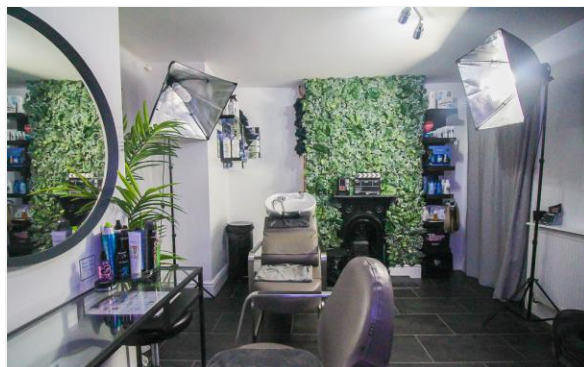
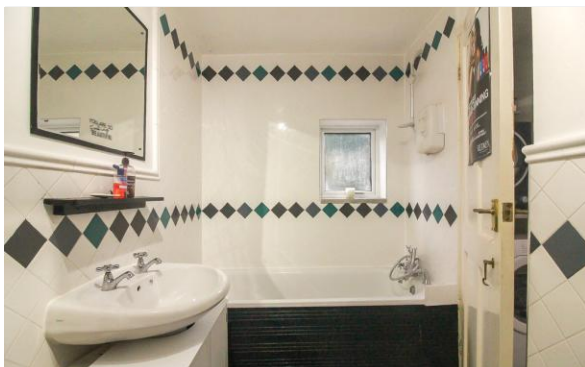


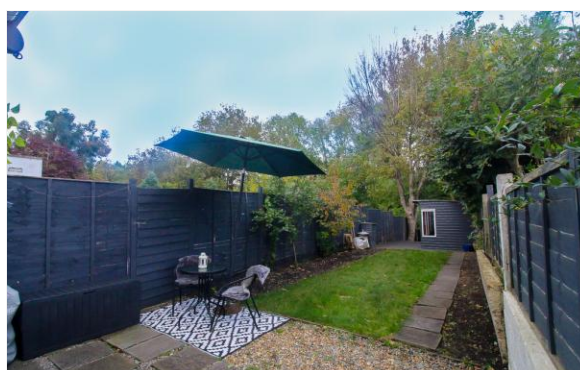
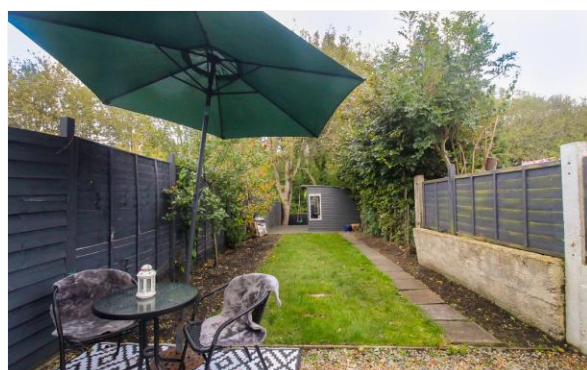
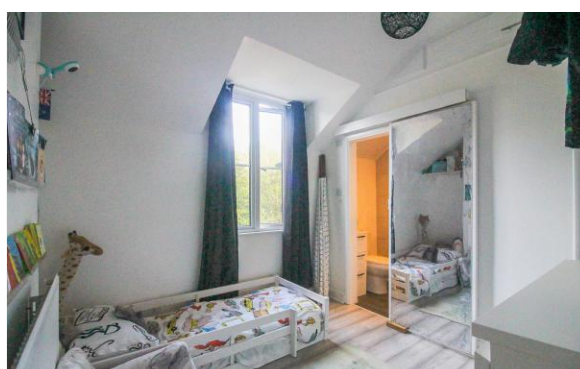
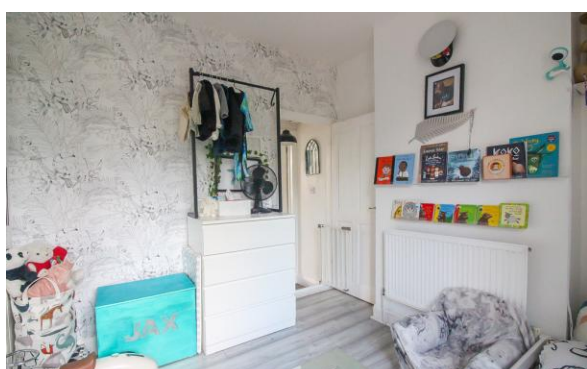


Paxton Road, Fareham

£295,000

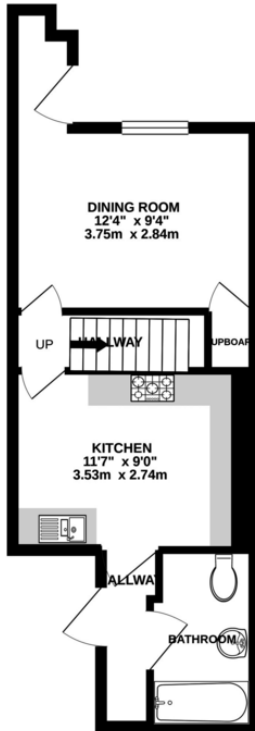


Paxton Road, Fareham

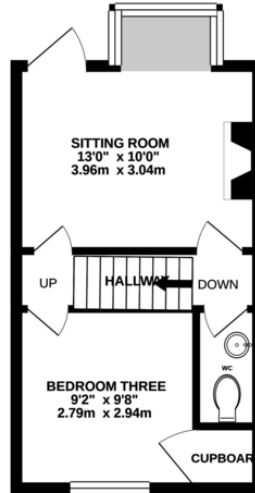


Paxton Road, Fareham

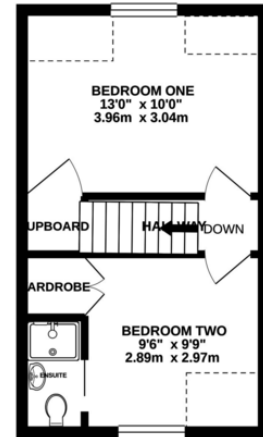
LOWER GROUND FLOOR



GROUND FLOOR



FIRST FLOOR



Whilst every attempt has been made to ensure the accuracy of the floorplan contained here, measurements of doors, windows, rooms and any other items are approximate and no responsibility is taken for any error, omission or mis-statement. This plan is for illustrative purposes only and should be used as such by any prospective purchaser. The services, systems and appliances shown have not been tested and no guarantee as to their operability or efficiency can be given.
Made with Metropix ©2021

- THREE DOUBLE BEDROOMS
- WALKING DISTANCE TO FAREHAM STATION
- LARGE PRIVATE GARDEN
- EN-SUITE AND DOWNSTAIRS WC
- CENTRAL FAREHAM
- SPLIT LEVEL LIVING
- MUST SEE TO APPRICIATE
- MODERN THROUGHOUT
-

FRONTAGE Two entrances one to main lounge from stairs and second on lower floor, on street parking available

LOUNGE Soft carpet, smooth walls, log burner, square bay window to front aspect TV and Ariel points

BEDROOM THREE 9' 2" x 9' 8" (2.79m x 2.95m) Grey laminate flooring, smooth walls, currently being used as a walk in wardrobe, storage cupboard

WC WC and hand basin, extractor fan

BEDROOM ONE 13' 0" x 10' 0" (3.96m x 3.05m) Grey laminate flooring, smooth walls, storage cupboard

BEDROOM TWO 9' 6" x 9' 9" (2.9m x 2.97m) Grey laminate flooring, smooth walls, access to en-suite (electric shower, hand basin and WC, tiled surround) storage cupboard

DINING ROOM 12' 4" x 15' 4" (3.76m x 4.67m) Luxury vinyl flooring, smooth walls, feature fireplace, cupboard, door access to front aspect, square bay window, storage, currently being used as home salon, perfect for working from home businesses

KITCHEN/BREAKFAST ROOM 11' 7" x 9' 0" (3.53m x 2.74m) Stone flooring, smooth walls, splash back surround, wall and base units, gas cooker and hob with hood, space for white goods, stainless steel sink and drainer, walk through to handy utility space, door to rear garden

BATHROOM Stone flooring, tiled splash back surround, WC, vanity basin, bathtub with shower over, obscure window to rear aspect

GARDEN Very private garden, approx 70ft, laid to lawn with decked split level area, outbuilding