



35 Victoria Road
Romford
Essex
RM1 2LH

Tel: 01708 504455
Email: sales@gbpestates.co.uk
Website: www.gbpestates.co.uk



Moss Lane, Romford

£475,000 - £500,000 Guide Price



This three bedroom beautiful modern home is located on a new style development and close to Romford Town Centre. With many benefits which include three double bedrooms, ensuite to main bedroom, good size lounge, Fully fitted kitchen, cloakroom, off street parking and a well maintained garden.

Located for Romford Station with main line station to Liverpool Street and Stratford, local bus routes, schools, Sapphire Leisure centre, shopping centre, entertainment venues, restaurants and much more.

- **THREE DOUBLE BEDROOMS**
- **ENSUITE**
- **GOOD SIZE LOUNGE**
- **CLOAKROOM**
- **WELL MAINTAINED GARDEN**
- **OFF STREET PARKING FOR TWO CARS**
- **CLOSE TO ROMFORD TOWN CENTRE**
- **MODERN STYLE DEVELOPMENT**
- **DOUBLE GLAZING**
- **GAS CENTRAL HEATING**

ACCOMMODATION

HALLWAY

CLOAKROOM

KITCHEN 12' 9" x 8' 4" (3.89m x 2.54m)

LOUNGE/DINER 17' 3" x 16' 1" (5.26m x 4.9m)

LANDING

BEDROOM 11' 3" x 8' 10" (3.43m x 2.69m)

BEDROOM 12' 8" x 12' 1" (3.86m x 3.68m)

ENSUITE

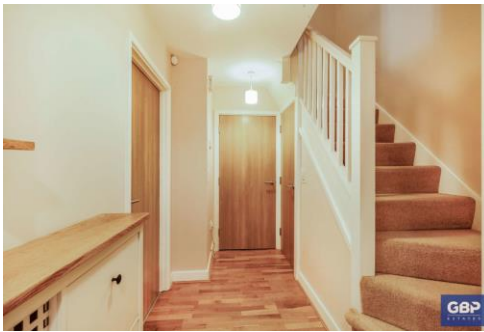
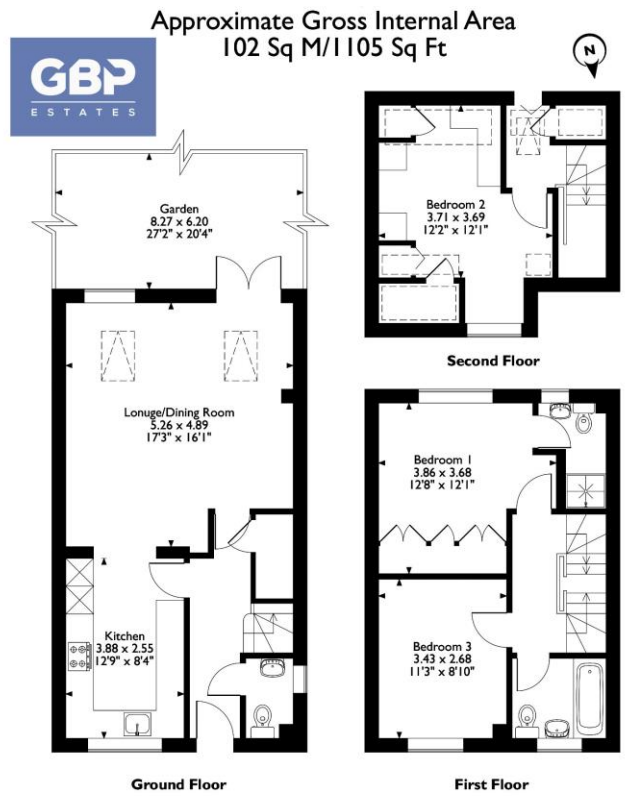
BATHROOM

LANDING - SECOND FLOOR

BEDROOM 12' 2" x 12' 1" (3.71m x 3.68m)

GARDEN

OFF STREET PARKING



Energy Efficiency Rating		Current	Potential
Very energy efficient - lower running costs			
(92-100)	A		
(81-91)	B		88
(69-80)	C	77	
(55-68)	D		
(39-54)	E		
(21-38)	F		
(1-20)	G		
Not energy efficient - higher running costs			
England, Scotland & Wales		EU Directive 2002/91/EC	



DISCLAIMER: These particulars, whilst believed to be accurate are set out as a general outline only for guidance and do not constitute any part of an offer or contract. Intending purchasers should not rely on them as statements or representation of fact, but must satisfy themselves by inspection or otherwise as to their accuracy. We have not carried out a detailed survey nor tested the services, appliances and specific fittings. Room sizes should not be relied upon for carpets and furnishings. The measurements given are approximate. No person in this firm's employment has the authority to make or give any representation or warranty in respect of the property.