



Rutley Close, Romford **Guide Price £260,000 - £280,000**



This is a lovely one-bedroom semidetached home, located within a good development in Harold Wood.

The space comprises of a lounge with a social aspect kitchen, a double bedroom with fitted wardrobes and a bathroom with an overhead shower.

The property does have allocated parking and a side garden space.

- **ONE BEDROOM**
- **SEMI DETACHED HOUSE**
- **OFF STREET ALLOCATED PARKING**
- **FITTED WARDROBES**
- **OVERHEAD SHOWER**
- **SIDE GARDEN SPACE**
- **GOOD DEVELOPMENT**
- **GOOD TRANSPORT LINKS**
- **CLOSE TO LOCAL AMENITIES**
- **POTENTIAL TO EXTEND**

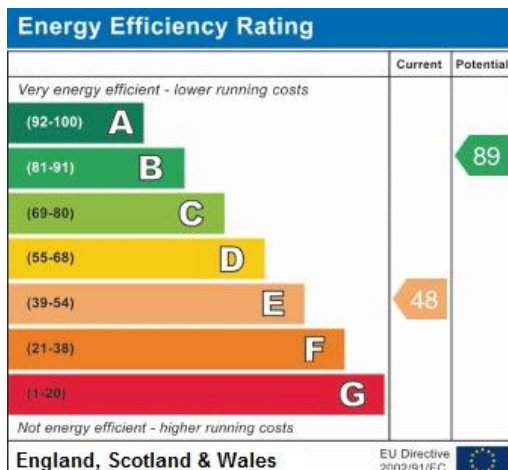
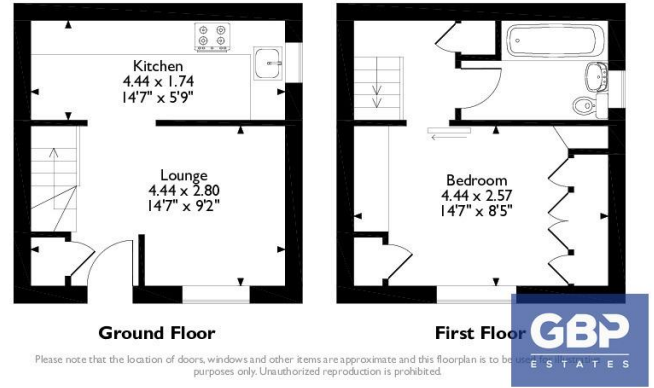
ACCOMMODATION

LOUNGE 14' 7" x 9' 2" (4.44m x 2.79m)

KITCHEN 14' 7" x 5' 9" (4.44m x 1.75m)

BEDROOM 14' 7" x 8' 5" (4.44m x 2.57m)

3, Rutley Close, Romford
Approximate Gross Internal Area
42 Sq M/444 Sq Ft



DISCLAIMER: These particulars, whilst believed to be accurate are set out as a general outline only for guidance and do not constitute any part of an offer or contract. Intending purchasers should not rely on them as statements or representation of fact, but must satisfy themselves by inspection or otherwise as to their accuracy. We have not carried out a detailed survey nor tested the services, appliances and specific fittings. Room sizes should not be relied upon for carpets and furnishings. The measurements given are approximate. No person in this firm's employment has the authority to make or give any representation or warranty in respect of the property.