



35 Victoria Road
Romford
Essex
RM1 2LH

Tel: 01708 504455

Email: sales@gbpestates.co.uk

Website: www.gbpestates.co.uk



North Street, Romford £250,000 - £275,000



Located in Romford Town Centre is this well presented apartment which has many benefits which include two good size bedrooms with the main bedroom having an ensuite.

Kitchen / lounge area with over 23ft of space having patio doors to your own balcony. Underfloor heating.

Wooden flooring to lounge kitchen areas.

No onward Chain. Leasehold

- **TWO BEDROOMS**
- **MAIN BEDROOM WITH ENSUITE**
- **UNDERFLOOR HEATING**
- **WOODEN FLOORING TO KITCHEN / LOUNGE**
- **WELL PRESENTED THROUGHOUT**
- **23FT LOUNGE / KITCHEN WITH BALCONY**
- **LOCATED IN ROMFORD MARKET TOWN**
- **LOCATED FOR ROMFORD STATION/ BUS ROUTES**
- **NO ONWARD CHAIN**
- **MODER KITCHEN WITH APPLIANCES**

ACCOMMODATION

HALLWAY

LOUNGE / KITCHEN AREA

23' 8" x 13' 5" (7.21m x 4.09m)

BALCONY

7' 7" x 2' 10" (2.31m x 0.86m)

BEDROOM

15' 9" x 7' 10" (4.8m x 2.39m)

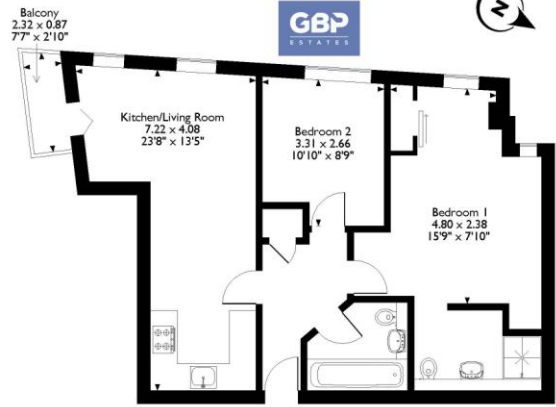
ENSUITE

BEDROOM

10' 10" x 8' 9" (3.3m x 2.67m)

BATHROOM

Rubicon Court, Apartment 4, 21-23, North Street, Romford
Approximate Gross Internal Area
64 Sq M/688 Sq Ft



Please note that the location of doors, windows and other items are approximate and this floorplan is to be used for illustrative purposes only. Unauthorized reproduction is prohibited.



Energy Efficiency Rating		Current	Potential
Very energy efficient - lower running costs			
(92-100)	A		
(81-91)	B		
(69-80)	C		
(55-68)	D	62	62
(39-54)	E		
(21-38)	F		
(1-20)	G		
Not energy efficient - higher running costs			
England, Scotland & Wales		EU Directive 2002/91/EC	



DISCLAIMER: These particulars, whilst believed to be accurate are set out as a general outline only for guidance and do not constitute any part of an offer or contract. Intending purchasers should not rely on them as statements or representation of fact, but must satisfy themselves by inspection or otherwise as to their accuracy. We have not carried out a detailed survey nor tested the services, appliances and specific fittings. Room sizes should not be relied upon for carpets and furnishings. The measurements given are approximate. No person in this firm's employment has the authority to make or give any representation or warranty in respect of the property.