



35 Victoria Road
Romford
Essex
RM1 2LH

Tel: 01708 504455

Email: sales@gbpestates.co.uk

Website: www.gbpestates.co.uk



George Street, Romford £325,000 - £350,000



"NO CHAIN" Mid Terrace House located close for Romford station and town centre.

This property has plenty of living space which includes through lounge / dining room of over 21ft.

Two good size bedrooms, downstairs cloakroom and upstairs bathroom.

Off street parking, good location this will suit first time buyer or even a Buy to Let Purchase. Freehold

- TWO DOUBLE BEDROOMS
- MID TERRACE
- 22FT LOUNGE / DINER
- OFF STREET PARKING
- UPSTAIRS BATHROOM
- CLOAKROOM
- CLOSE FOR TOWN CENTRE AND STATION
- DOUBLE GLAZING
- GAS CENTRAL HEATING
- CHAIN FREE

ACCOMMODATION

LOUNGE / SITTING ROOM 21' 2" x 13' 5" (6.45m x 4.09m)

STORAGE ROOM 8' 0" x 4' 11" (2.44m x 1.5m)

KITCHEN 9' 5" x 7' 5" (2.87m x 2.26m)

CLOAKROOM

LANDING

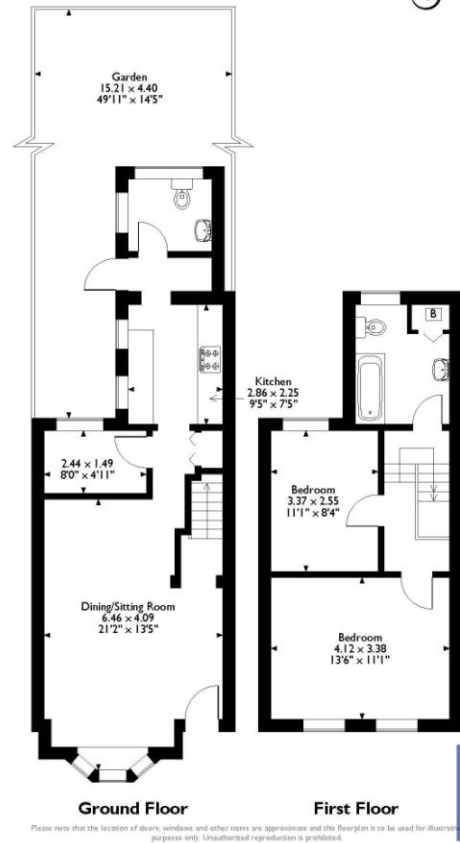
BEDROOM 11' 1" x 8' 4" (3.38m x 2.54m)

BEDROOM 13' 6" x 11' 1" (4.11m x 3.38m)

BATHROOM

GARDEN 49' 11" x 14' 5" (15.21m x 4.39m)

George Street, Romford, Essex
Approximate Gross Internal Area
81 Sq M/871 Sq Ft



Please note that the location of doors, windows and other items are approximate and this floorplan is to be used for illustrative purposes only. Unauthorised reproduction is prohibited.



Energy Efficiency Rating		Current	Potential
Very energy efficient - lower running costs			
(92-100)	A		
(81-91)	B		88
(69-80)	C	69	
(55-68)	D		
(39-54)	E		
(21-38)	F		
(1-20)	G		
Not energy efficient - higher running costs			
England, Scotland & Wales		EU Directive 2002/91/EC	



DISCLAIMER: These particulars, whilst believed to be accurate are set out as a general outline only for guidance and do not constitute any part of an offer or contract. Intending purchasers should not rely on them as statements or representation of fact, but must satisfy themselves by inspection or otherwise as to their accuracy. We have not carried out a detailed survey nor tested the services, appliances and specific fittings. Room sizes should not be relied upon for carpets and furnishings. The measurements given are approximate. No person in this firm's employment has the authority to make or give any representation or warranty in respect of the property.