



Wolseley Road,  
Romford, Essex, RM7 0BP

Guide Price £425,000 - £450,000  
Freehold

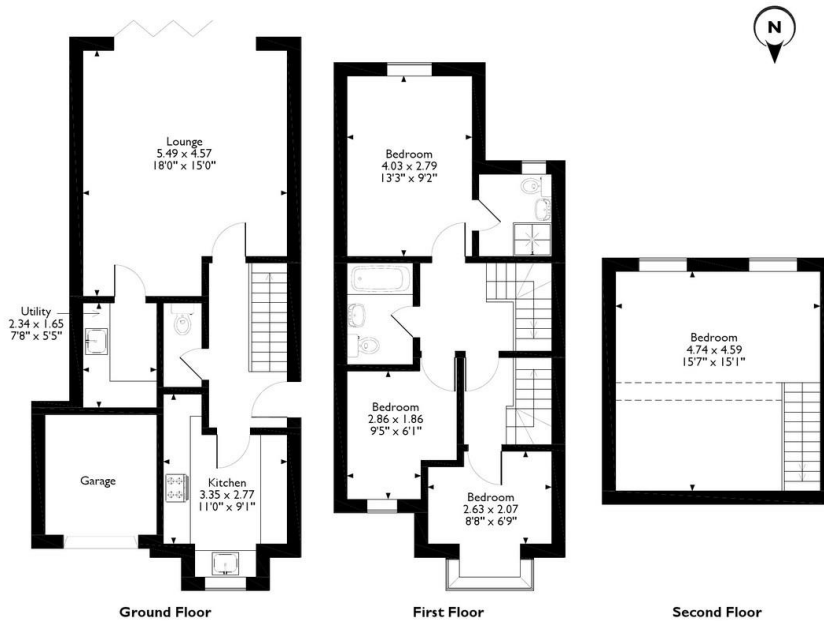
# Property Summary

"NEW BUILD" Detached four bedroom home with garage and off street parking. A fabulous house with many features, including a utility room, ensuite, good size garden, large bedroom to third floor. Great location for Romford Town / Station and bus routes to local areas. Guide Price £425,000 - £450,000



Approximate Gross Internal Area  
111 Sq M / 1199 Sq Ft

EPC TO FOLLOW



Please note that the location of doors, windows and other items are approximate and this floorplan is to be used for illustrative purposes only. Unauthorized reproduction is prohibited.

- **NEW BUILD**
- **DETACHED**
- **FOUR BEDROOMS**
- **ENSUITE**
- **UTILITY ROOM**
- **GARAGE**
- **GOOD SIZE GARDEN**
- **CLOSE TO ROMFORD TOWN**
- **BUS ROUTES TO LOCAL AREAS**
- **ROMFORD STATION**

35 Victoria Road  
Romford  
Essex  
RM1 2LH

[www.gbpestates.co.uk](http://www.gbpestates.co.uk)  
[sales@gbpestates.co.uk](mailto:sales@gbpestates.co.uk)  
01708 504455

Agents Note: Whilst every care has been taken to prepare these sales particulars, they are for guidance purposes only. All measurements are approximate are for general guidance purposes only and whilst every care has been taken to ensure their accuracy, they should not be relied upon and potential buyers are advised to recheck the measurements