



Greenstone Estates Limited
83 Boundary Road
St John's Wood
London NW8 0RG

Aberdeen Place, Little Venice, W9



A large 3 bedroom, 2 bathroom flat with a private balcony, wooden floors just moments from the shops, Regents Canal and cafe's of Little Venice and just a short walk to Warwick Avenue tube (Bakerloo Line).

The Apartment is arranged as bright reception with wooden floors, balcony, separate fully fitted kitchen, 3 double bedrooms, family bathroom and separate shower room.

Aberdeen Place is a quiet street in St Johns Wood, it's perfectly located for the amenities of Little Venice/Maida Vale and has all the benefit of being a short walk to St Johns Wood tube station (Jubilee Line). St Johns Wood is one of the finest locations in North West London with a superb high street with wonderful restaurants, boutique shops and The American School in London (ASL). Close to extensive open spaces of Regents Park, Primrose Hill, Paddington Recreational ground and the Regents Canal. Very close to the West End, Edgware Road, Marble Arch, easy commute to the City, direct train to Canary Wharf and close to Paddington Station and the Heathrow Express.

Westminster Band D - £780.28
EPC - D

£1,890 Per Month Subject to contract

Lettings: 020 7625 1000
Sales: 020 7625 7000



www.greenstone.com



www.facebook.com/greenstoneproperty

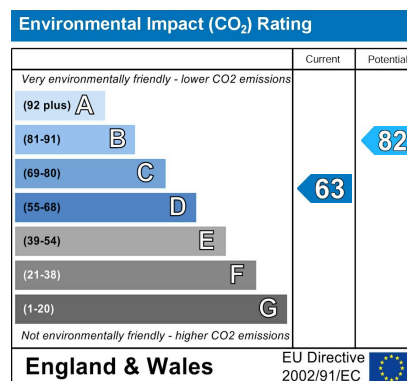
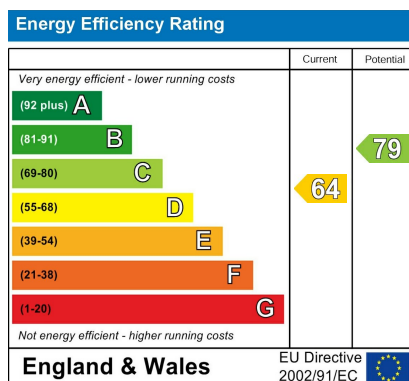


www.twitter.com/lewisgreenstone



www.youtube.com/user/greenstone





Lettings: 020 7625 1000
 Sales: 020 7625 7000

www.greenstone.com

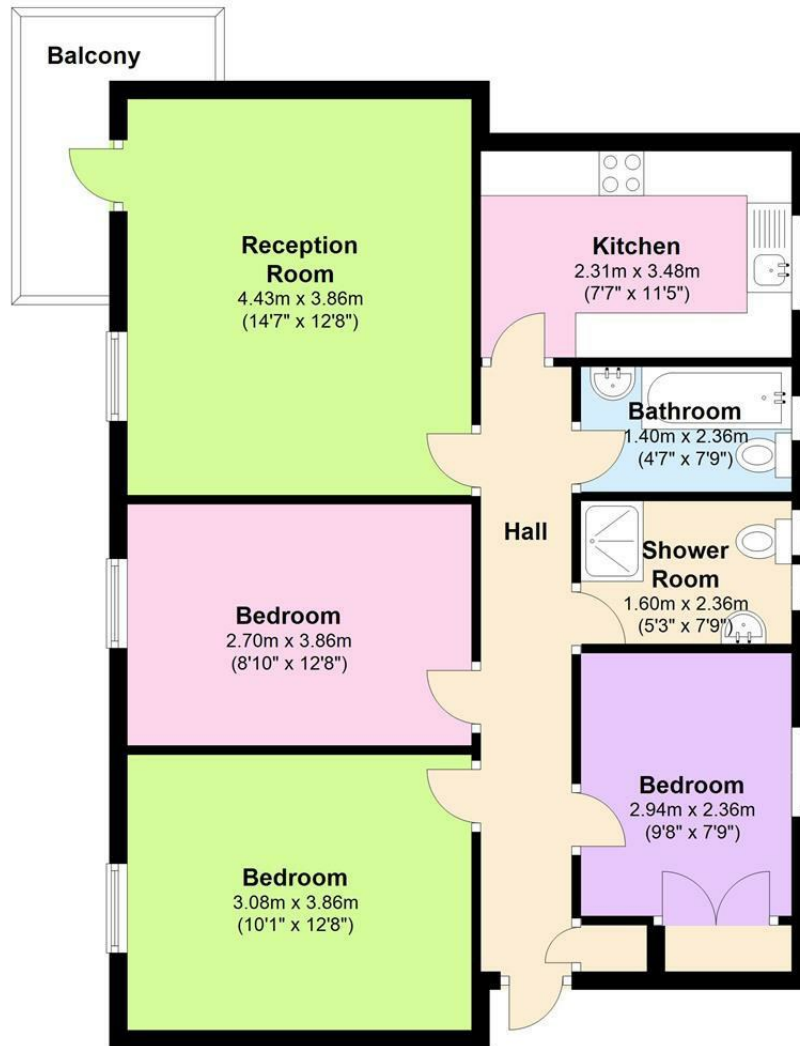
www.facebook.com/greenstoneproperty

www.twitter.com/lewisgreenstone

www.youtube.com/user/greenstone



Ground Floor



IMPORTANT NOTICE All of the information is intended only as a guide to a prospective purchaser and does not constitute any part of an offer or contract. Any measurements or distances referred to herein are approximate only. Any information contained herein (whether in the text, plans or photographs) is given in good faith and cannot be relied upon as being a statement or representation of fact. Should you proceed with the purchase of the property, your solicitor must verify these details. We have not carried out a detailed survey nor tested the services, appliances and specific fittings. In accordance with current legislation we would advise you that the measurements on these particulars are imperial. The formula for conversion to metric is as follows:- 1' (one foot) = 30.4cm (centimetres), 1m (one metre) = 3'29 (feet).